

Pest Identification

globe
KNOWLEDGE CENTRE

COCKROACHES



American Cockroach
Periplaneta americana



Australian Cockroach
Periplaneta australasiae



Smoky-Brown Cockroach
Periplaneta fuliginosa



Brown-Banded Cockroach
Supella longipalpa



Oriental Cockroach
Blattella orientalis



German Cockroach
Blattella germanica

FLIES AND MOSQUITOES



House fly
Musca domestica



Blow fly or Bluebottle
Family Calliphoridae



Mosquito
Family Culicidae



Vinegar fly
Family Drosophilidae



Drain (Moth) fly
Family Psychodidae



Flesh fly
Family Sarcophagidae



Sciarid fly
Family Sciaridae



Phorid (Hunchback) fly
Family Phoridae



Biting midge
Family Ceratopogonidae



Norway rat
Rattus norvegicus



Roof rat
Rattus rattus



House mouse
Mus domestica

RODENTS



Cat flea
Ctenocephalides felis



Dog flea
Ctenocephalides canis



Huntsman spider
Family Sparassidae



Black House spider
Badumna insignis



White Tailed Spider
Lampona cylindrata

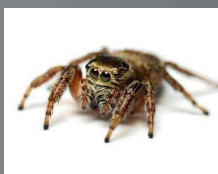


Sydney Funnelweb spider
Atrax robustus

FLEAS



Redback spider
Latrodectus hasselti



Jumping spider
Family Salticidae



Daddy Longlegs spider
Pholcus phalangioides



St Andrew's Cross spider
Argiope spp.



Golden Orb Weaving Spider
Nephila spp.



White-footed black house ant
Technomyrmex albibpes

ANTS



Black house ant
Ochetellus glaber



Coastal brown ant
Pheidole megacephala



Brown house ant
Doleromyrma darwiniana



Pharaoh's ant
Monomorium pharaonis



Argentine ant
Linepithema humile



Singapore ant
Monomorium destructor